

2015 Rainfall Data Analysis

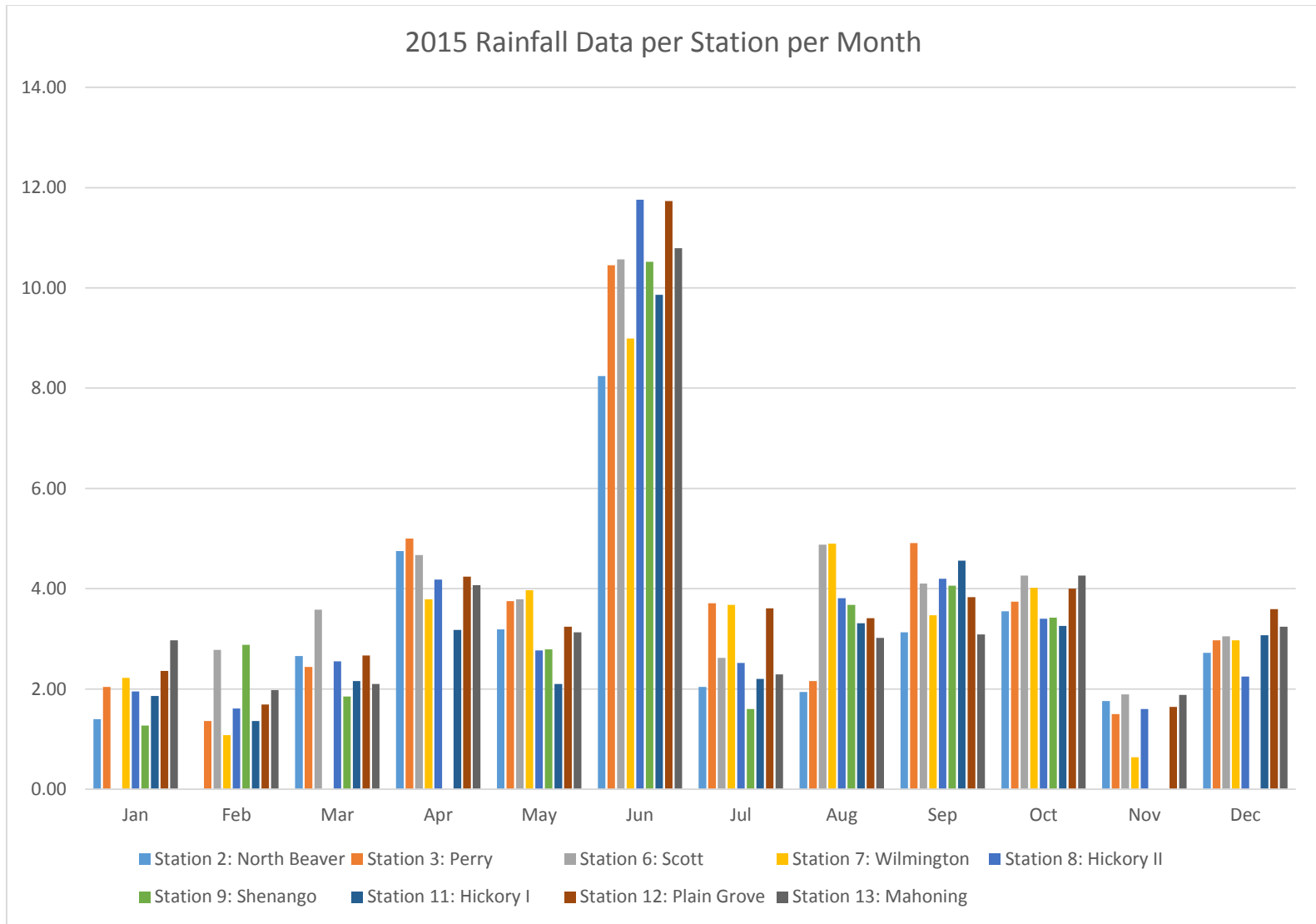
Each year the Conservation District collects rainfall data from monitoring stations throughout Lawrence County. Volunteers residing in 9 different municipalities collect daily readings from their rain gauges, record the measurements on a pre-paid postcard, and send the results at the end of the month to our office where we enter the data into a computer.

The following charts displays the rainfall data collected by the volunteers for 2015. All data is presented in inches.

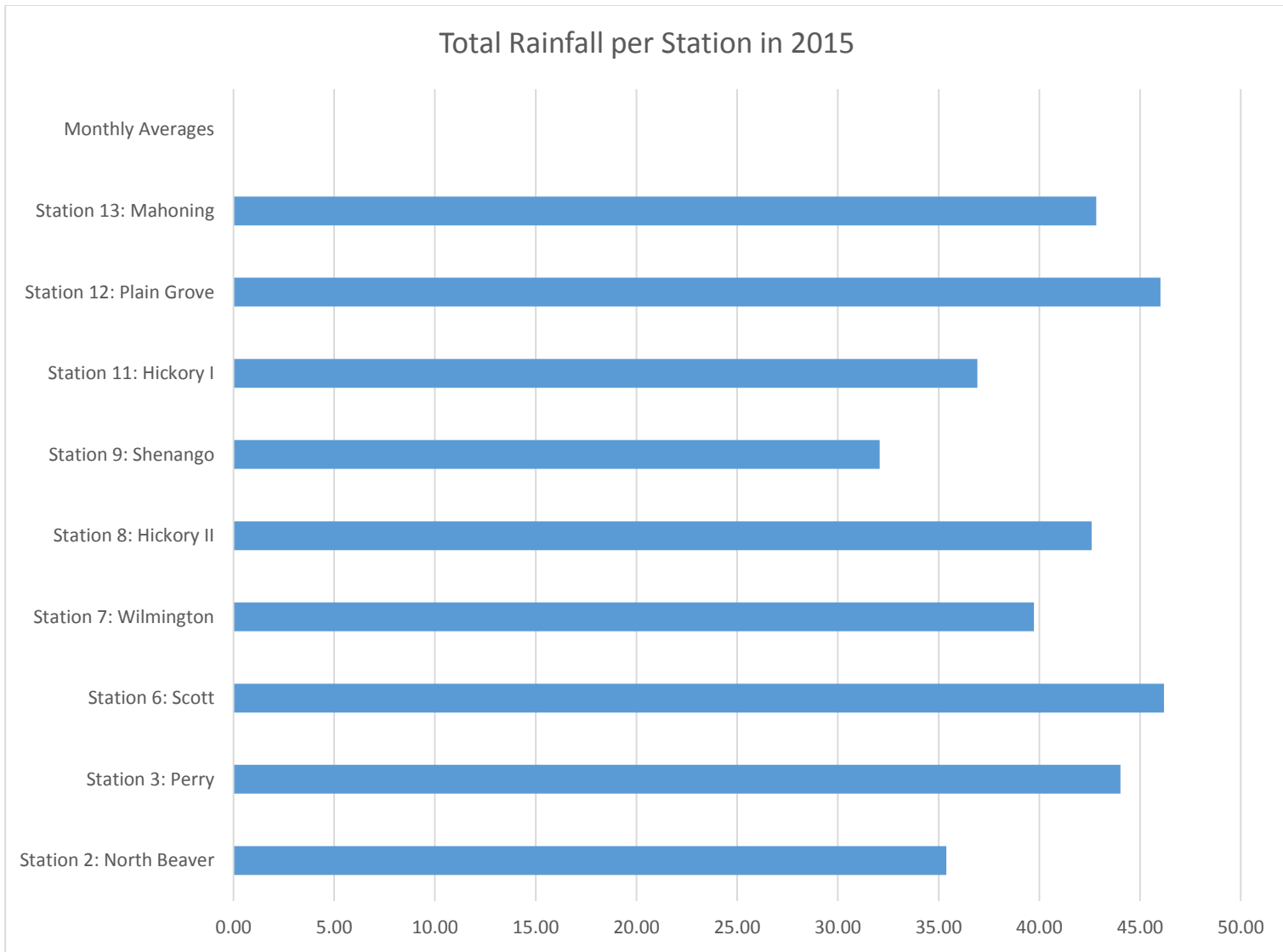
2015 RAW RAINFALL DATA													
Municipality	Jan	Feb	Mar	Apr	May	Jun	Jul	Aug	Sep	Oct	Nov	Dec	Total
Station 2: North Beaver	1.40	-	2.66	4.75	3.19	8.24	2.04	1.94	3.13	3.55	1.76	2.72	35.38
Station 3: Perry	2.04	1.36	2.44	5.00	3.75	10.45	3.71	2.16	4.91	3.74	1.5	2.97	44.03
Station 6: Scott		2.78	3.58	4.67	3.79	10.57	2.62	4.88	4.10	4.26	1.89	3.05	46.19
Station 7: Wilmington	2.22	1.08		3.79	3.97	8.99	3.68	4.90	3.47	4.02	0.64	2.97	39.73
Station 8: Hickory II	1.95	1.61	2.55	4.18	2.77	11.76	2.52	3.81	4.20	3.4	1.6	2.25	42.60
Station 9: Shenango	1.27	2.88	1.85		2.79	10.52	1.60	3.68	4.06	3.42	*No Gauge		32.07
Station 11: Hickory I	1.86	1.36	2.16	3.18	2.10	9.86	2.20	3.31	4.56	3.26		3.07	36.92
Station 12: Plain Grove	2.36	1.69	2.67	4.24	3.24	11.73	3.61	3.41	3.83	4	1.64	3.59	46.01
Station 13: Mahoning	2.97	1.98	2.10	4.07	3.13	10.79	2.29	3.02	3.09	4.26	1.88	3.24	42.82
Monthly Averages	2.01	1.84	2.50	4.24	3.19	10.32	2.70	3.46	3.93	3.77	1.56	2.98	

*Gray Box = Missing Data

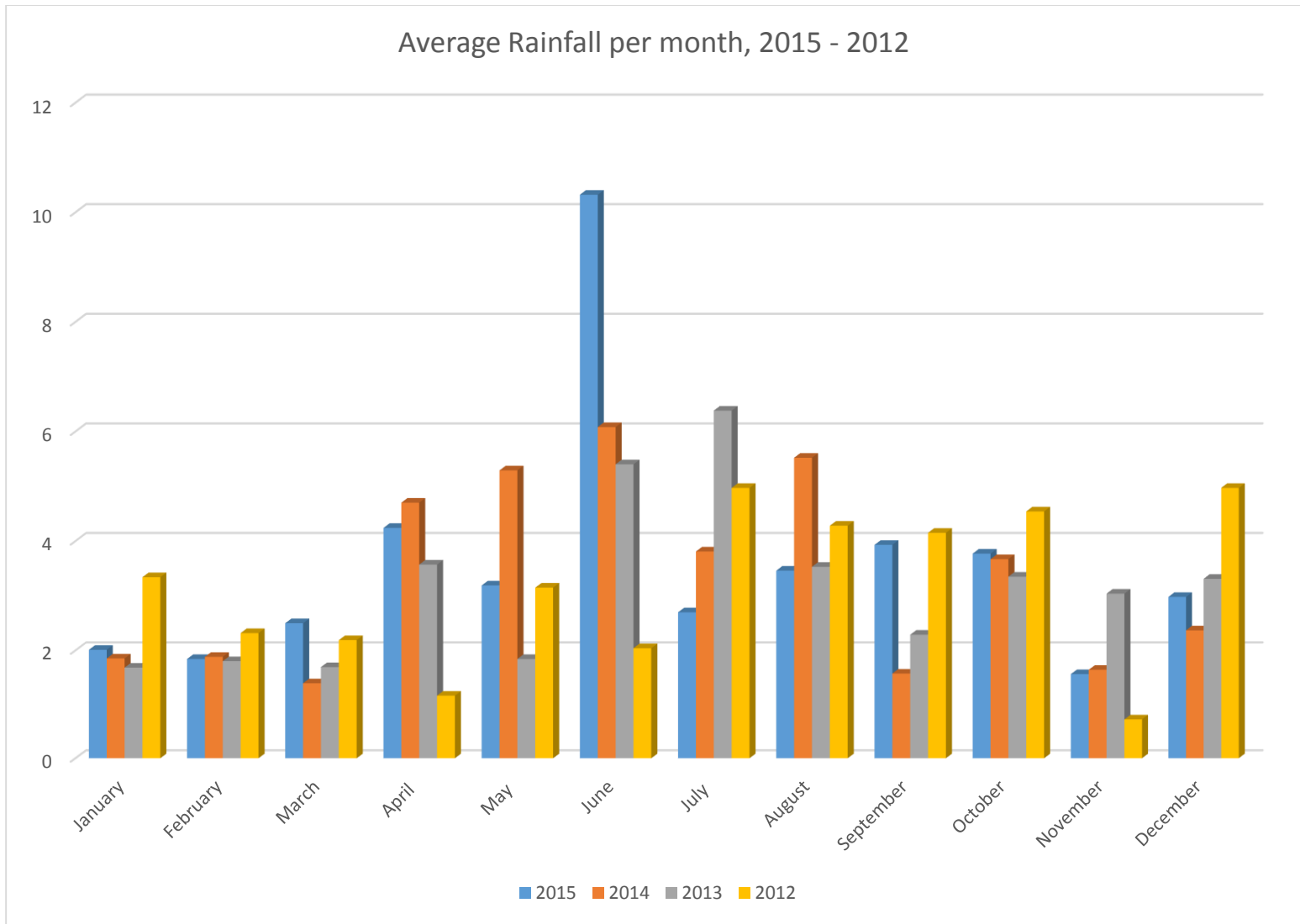
Lawrence County Conservation District Rainfall Data 2015



Lawrence County Conservation District Rainfall Data 2015



Lawrence County Conservation District Rainfall Data 2015



Lawrence County Conservation District Rainfall Data 2015

